

PROFESSIONAL 2200W DIGITAL DRYER GOLD**FX** - WHITE**FX** - BLACK**FX** - RED**FX**

High-performance

Perfectly balanced

Italian-designed

The **FX** dryer offers the superior engineering and sleek styling that make our **FX** collections so popular. Compact housing powered by a high-speed digital engine allows faster styling and maneuvering. A turbo button boosts speed. A long, knurled metal handle gives a premium feel and ensures the ultimate no-slip grip, even with styling products on your hands.

Dual heat and speed settings, snap-on concentrators, beard pic, and diffuser make this an essential styling tool.

Its T-shape design -specific to blow dryers of tomorrow- ensures a perfect balance while the **FX** dryer delivers true professional performance.



BaByliss**PRO**[®]
4rtists

www.babylisspro.eu

Reasons why you have made the right choice:

10 000-hour lifespan DIGITAL motor

Provided with digital motor, its lifespan is up to 10 times longer than traditional hairdryers and driven by electronics for optimum output. Air flow and speed are constantly controlled for maximum stability. There is no decrease of power, nor decrease of performance. Vibrations are significantly reduced.

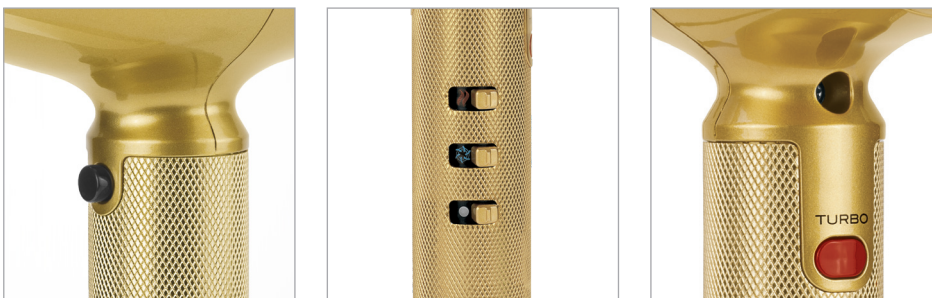
This exclusive feature offers genuine efficiency, the best styling results and total respect of the hair fiber.

► **You will work in better conditions, faster, you will get even better styling results.**

TURBO function, power and care booster

The turbo function has the twofold advantage of being able to increase speed and air flow without increasing temperature. It makes drying faster or can emphasize the finishing touches on certain locks without compromising hair protection.

The **FX** dryer features 2 speed settings and 2 temperature settings for maximum flexibility and a cold shot for the final touch.



► **You will work super-fast while preserving your clients' hair integrity.**

Ionic technology

Its ionic generator makes drying and styling easier in decreasing tension at the hair surface, giving smooth, shiny and healthy hair.

► **Your clients are happy because you transform their hair into a beautiful smooth, shiny and easy-to-style matter.**

Ergonomic design and perfect balance

The **FX** weighs 420 grams only. Its knurled metal extended handle ensures ultimate no-slip grip. The dryer's T-shape makes it perfectly aligned with the appliance's centre of gravity; it is the guarantee of a balanced, comfortable grip.

► **You will work without strain in the forearm and without tiredness.**



BaByliss**PRO**
Artists

www.babylisspro.eu

Accessories

The **FX** hair dryer comes with 3 different concentrator nozzles.

One straight, narrow 6mm x 60mm nozzle that is perfect for straightening because it lets you achieve the required tension on the hair.

One ultra-thin 4mm x 70mm nozzle for optimal, controlled air pressure and even more efficiency.

6 x 75 mm beveled, large nozzle for smoother blow-drying; it is slightly diagonal in shape, hugging the shape of the brush perfectly.

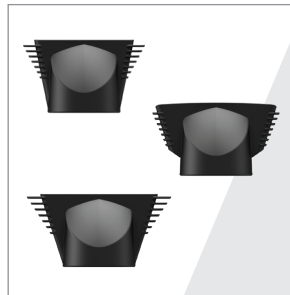
A comb comes as an attachment to this nozzle to allow beard drying and styling. We recommend to set the dryer on temperature I and speed I (or speed II if you wish to lower the temp level even more) with or without turbo every time you use it for beard's care.



These nozzles have been upgraded and now have fins on their sides which:

- decrease high temperature on the sides of the nozzle
 - the nozzle can be touched with hands even when the blow dryer is on
 - reduces the risk to damage surfaces where the dryer in use is laid down
- can be used as a pic to better control the hair strand.

The FX dryer also comes with a silencer for always more comfort in use for your clients and for you, as well as a diffuser for drying curly and wavy hair without adding unwanted volume.



► **Endless possibilities of creations and uses are brought to you by the FX dryer.**



Metal hanging hook

Extended cord bushing keeps the cord outside the client



BaByliss**PRO**
Artists

www.babylisspro.eu

Specially designed for maximum airflow, low noise, low vibration and minimum weight, the FX blow dryer, a pure MADE IN ITALY technological and engineering gem, delivers faster drying and long-lasting styling results with your and your clients' comfort in mind.

Features

- High speed EDM TECHNOLOGY motor (23500rpm)
- Powerful 2200 watts
- Lightweight 420 g
- Long life, up to 10 000 hours
- Air speed: 190km/hr
- Airflow: 73 m³/h
- Air pressure: 2035Pa
- Drying rate: 6.1 grams of water dried in a minute
- Central ion generator
- 2 speed settings and 2 temperature settings
- Cold shot
- Turbo function
- 3 concentrator nozzles + 1 beard pic
- Diffuser
- Removable silencer rear filter
- Hanging hook
- 2,75m tangle-free power cord



**Make the most of your FX dryer
and share your creations!**

**#teambabylisspro #babylisspro #babylisspro4artists #professional #fxdryer
#goldfx #redfx #blackfx #whitefx**

www.babylisspro.tv www.babylisspro.eu

#ILOVEMYHAIRDRYER

THE FX DRYER WILL BE YOUR FELLOW WORKER FOR A LONG TIME AND THE MORE YOU WILL KEEP IT CLEAN, THE LONGER IT WILL LAST. LOVE YOUR HAIR DRYER AND MAKE SURE IT IS KEPT CLEAN FOR PROPER OPERATING PERFORMANCE. CLEAN IT ON A DAILY BASIS. FOR MORE INFORMATION ON HOW TO ENSURE THE BEST MAINTENANCE, REFER TO THE CLEANING INSTRUCTIONS INDICATED IN THE BOOKLET DELIVERED WITH THE DRYER.

FXBDG1E

Barcode 3030050177121

FXBDW1E

Barcode 3030050179569

FXBDB1E

Barcode 3030050179552

FXBDR1E

Barcode 3030050179545



**BaByliss[®]PRO
4artists**

w w w . b a b y l i s s p r o . e u