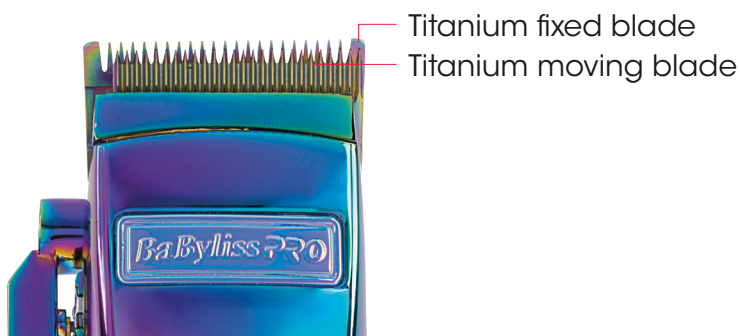
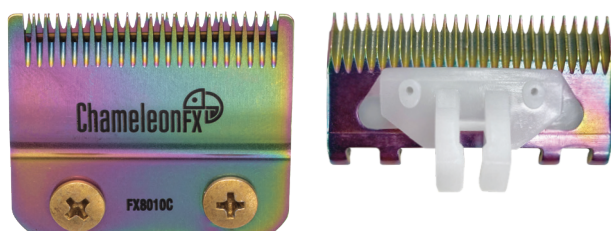


# TITANIUM FADE BLADES FOR METALFX - LOPROFX CLIPPER FX8010CME



FX8700IE



- 45mm Graphite FADE blade
- Features a flat elongated cutting surface that supports a vertical cutting motion.
- Ideal for precision and detail work, the long angle allows to go as close as possible to the skin for precise clean cut.

## Titanium Technology:

- Hypo-allergenic
- Extremely durable: corrosion resistant
- Lower blade temperature – no overheating
- Crunch sound when cutting

SCAN ME TO KNOW ALL ABOUT  
BLADES' GEOMETRY



« A must have for master barbers that want to level up » @StayGold31

FX8010CME

Barcode 3030050164312

**BaBylissPRO<sup>®</sup> Artists**

www.babylisspro.eu

## FITS

### ALL 2-HOLE BLADE SYSTEMS

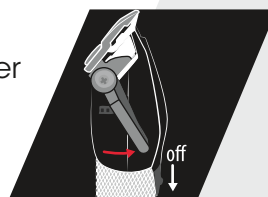
● FX8700IE ● FX8700GE ● FX825E ● FX8700BKE ● FX8700RE ● FX8700RGE ● FX8700E ● FX8705E



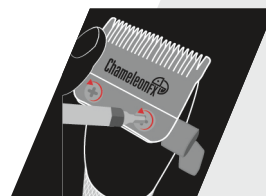
● ORIGINAL REPLACEMENT BLADE ● OPTIONAL REPLACEMENT BLADE

## How to replace the blades?

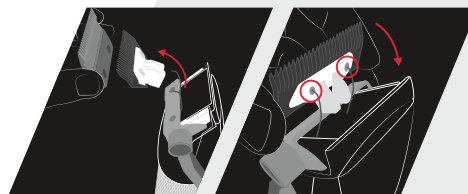
- Unplug the unit, make sure it is on the off position and set the taper upwards.



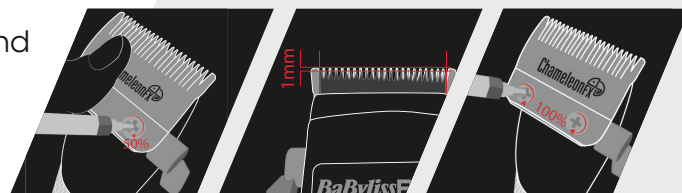
- Remove the screws and the fixed blade. Save the screws.



- Lift off the small moving blade.
- Replace it with the new one on the plastic oscillator.



- Replace the fixed blade using the screws and lightly tighten them.
- Adjust the teeth to a gap of 1mm to 1.5mm and the small, moving blade as centered and parallel as possible to the fixed blade's teeth.
- Don't forget to tighten the screws after the blades have been aligned.



- **IMPORTANT NOTE :** To ensure maximum performance clean and lubricate this tool on a regular basis. Make sure to add a few drops of BaBylissPRO® lubricating oil before running.



SCAN ME TO SEE  
THE TUTO

**BaBylissPRO**  
**Artists**

FX8010CME

Barcode 3030050164312

w w w . b a b y l i s s p r o . e u